



Shanghai World Financial Center

FLOOR GUIDE

ENGLISH

SWFC Highlights



Observatory — Shanghai Eye

Equipped with three transparent glass-floor walkways, the Sky Walk 100 is the most exciting venue for fashion shows and celebrations, with the magnificent view of Shanghai.



Park Hyatt Shanghai

Even among the luxurious Hyatt Group hotels in 54 countries around the globe, Park Hyatt stands out in the elegance of its accommodations and quality of personalized service.



Office

Pursuing high standards in both functionality and comfort as a world-class financial center, the prestigious office space of SWFC provides the essential cornerstone for business success.



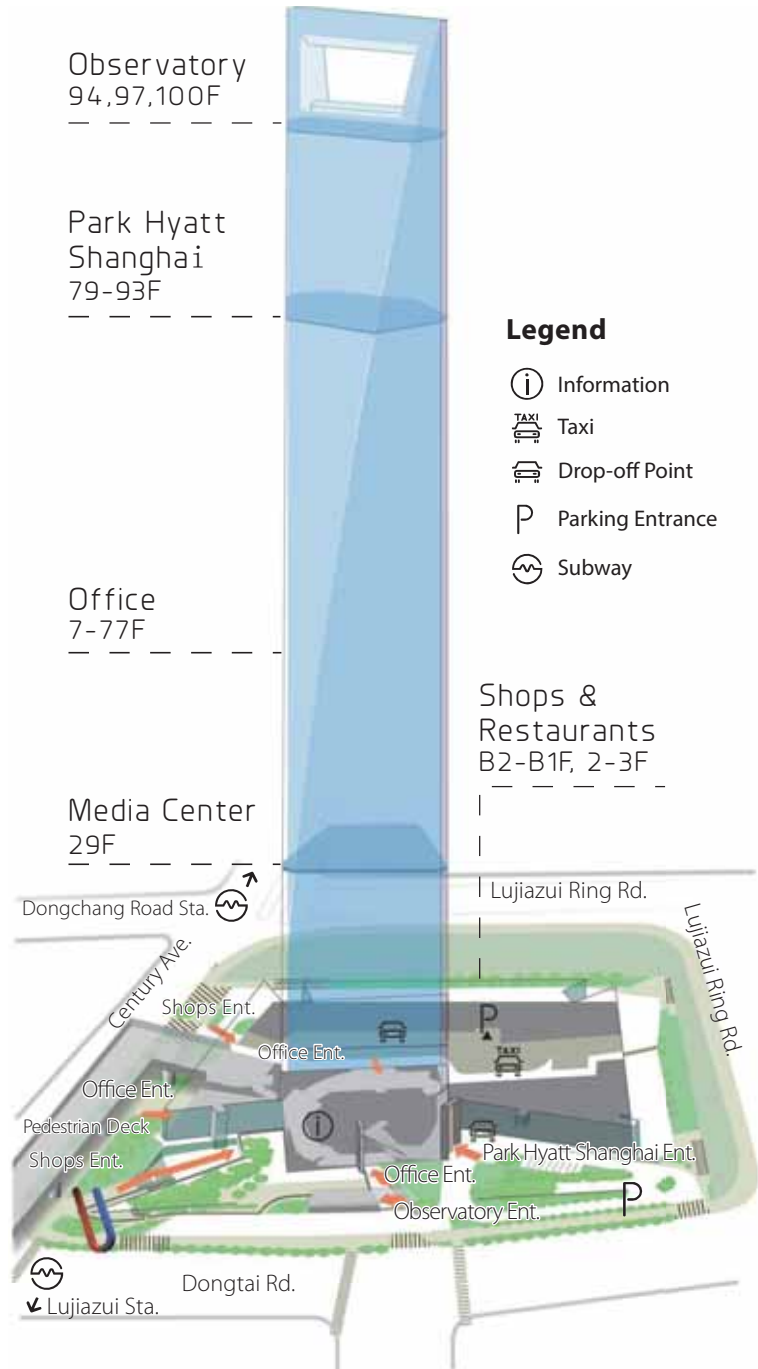
Media Center

In the Shanghai World Financial & Cultural Media Center, information about finance and culture originates and resonates, promoting exchange between people and cultures.



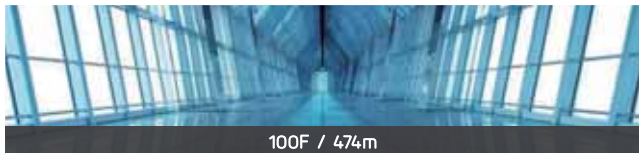
Shops and Restaurants

Serving as a stage for every business scene, cafes, restaurants and other service facilities provide a variety of support for office life.



Observatory – Shanghai Eye

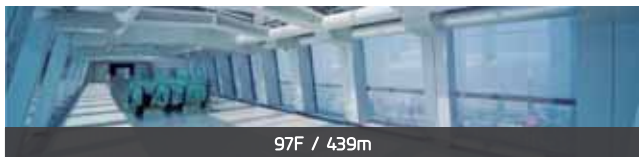
100F, 97F, 94F, B1F



100F / 474m

Sky Walk 100

Equipped with three transparent glass-floor walkways, the Sky Walk 100 is the most exciting venue for fashion shows and celebrations, with the magnificent view of Shanghai.



97F / 439m

Sky Walk 97

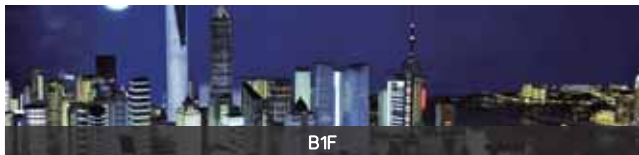
Like a bridge across the sky, the Sky Walk 97 makes visitors feeling like they are walking in the sky.



94F / 423m

Sky Arena 94

With a unique and extensive view of Shanghai, the Sky Arena 94 has a floor area of about 750 square meters with a clear ceiling height of 8 meters. It is available for prestigious occasions against the beautiful panorama of the Huangpu River. The Sky Arena 94 has become a famous landmark of art, culture and fashion in Lujiazui.



B1F

Sky Gate B1

Your journey to the sky starts from the "SKY GATE". A visual feast awaits you here, showing you the rapid changes of Shanghai through high multi-media technology displays and the world's most realistic miniature city model.

Admission fees: RMB 120 (94F), RMB 180(94, 97, 100F), RMB 300 (Exclusive Tour)

Event ticket price is published on site.

Business Hours : 8:00-23:00(admission until 22:00)

Tel. 4001-100-555 (Domestic free hotline)
(86-21) 6877-7878 (Overseas hotline)

Website: www.swfc-observatory.com

WeChat: SWFC-100



Park Hyatt Shanghai

79-93F

A special place for special moments, an elegant oasis in the sky.



Park Hyatt Shanghai is a sophisticated modern Chinese residence, featuring spacious guestrooms, exquisitely appointed contemporary interiors, stunning views over the city, state-of-the-art recreational facilities and exceptional restaurants and bars. The number of guestrooms has been limited specifically to just 174 (including 14 suites) to ensure a level of service and attention to detail that is unparalleled in the market.

Enjoy the delicacy of 100 Century Avenue above the sky - an ultimate banquet destination



100 Century Avenue

On floors 91 through 93, designed to reverberate with energy and excitement is primed to be the ultimate wining and dining destination in Shanghai.

* The 91st floor is the restaurant featuring Western-style steaks, Chinese wok, and Japanese sushi from one menu but prepared by multiple show kitchens.

* The 92nd floor showcases two bars-the Music Room featuring live R&B, resident DJ and special theme parties, and a sophisticated Shanghai 30's lounge featuring signature cocktail with unique addition of Chinese liqueur.

* The 93rd floor is the exceptional venue for private dining and events in the world, serving Western, Chinese and Japanese cuisines.

Tel. (021)6888-1234 | <http://shanghai.park.hyatt.cn>

WeChat: Park_Hyatt_Shanghai



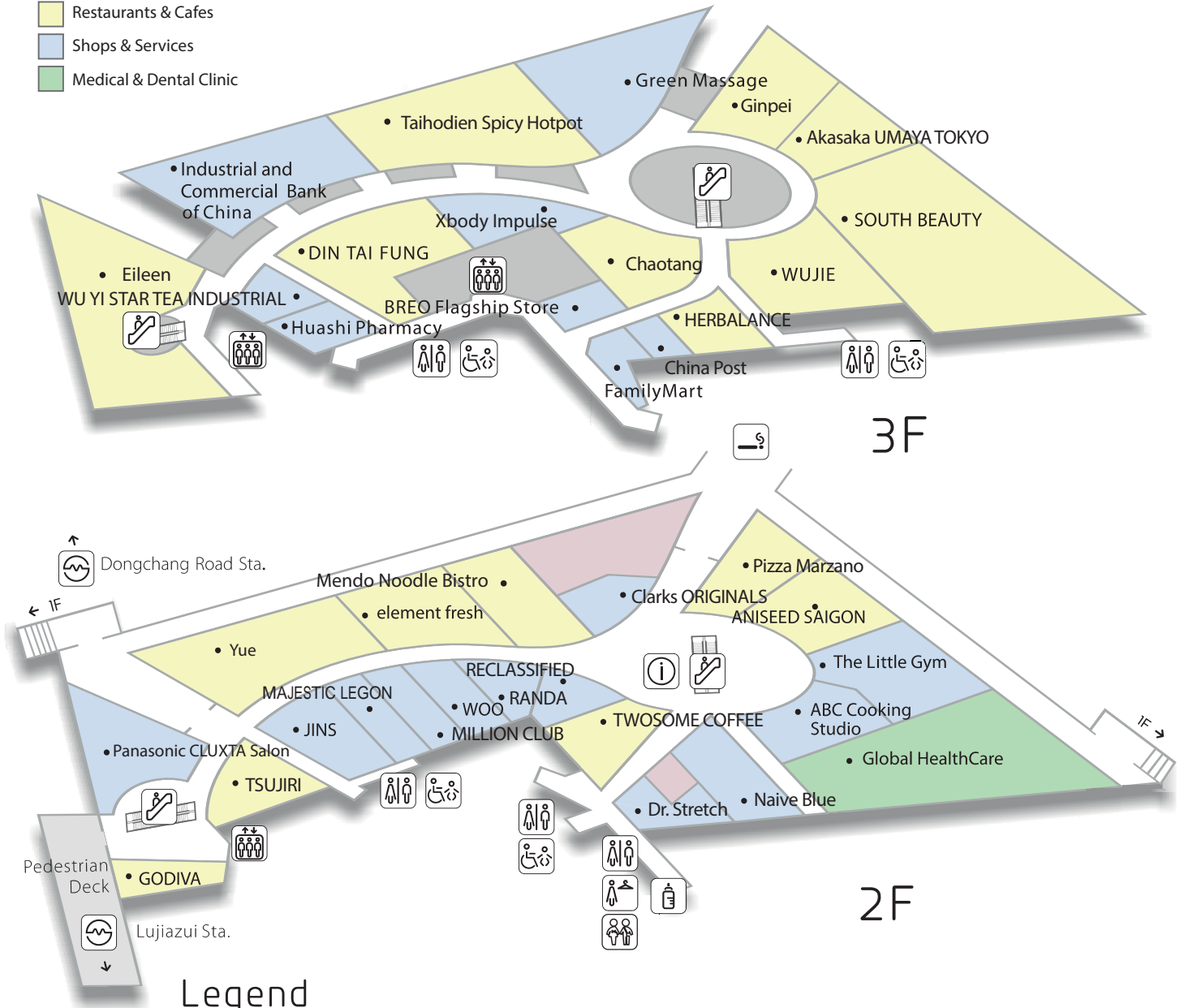
Kind New
环球尝新

INDEX

3F			
Akasaka UMayA TOKYO	Char-grilled & Japanese Cuisine	3F	P11
Chaotang	Chaoshan Cuisine	3F	P11
DIN TAI FUNG	Xiaolongbao, Dumplings	3F	P12
Eileen	Restaurant & Lounge	3F	P12
Ginpei	Japanese Cuisine	3F	P12
HERBALANCE	Herbal Drinks	3F	P12
SOUTH BEAUTY	Sichuan/Cantonese Cuisine	3F	P13
Taihadien Spicy Hotpot	Taiwanese Spicy Hotpot	3F	P13
WUJIE	Vegetarian Restaurant	3F	P13
BREO Flagship Store	Health Care	3F	P20
Green Massage	Relaxation	3F	P20
WU YI STAR TEA INDUSTRIAL	TEA TEAWARE	3F	P20
XBODY IMPULSE	High-Tech GYM	3F	P20
FamilyMart	Convenience Store	3F	P24
HUASHI	Pharmacy	3F	P24
ICBC	Bank	3F	P24
CHINA POST	Post Off ice	3F	P24
2F			
ANISEED SAIGON	Vietnamese Cuisine	2F	P13
element fresh	International food	2F	P14
GODIVA	Chocolate	2F	P14
Mendo Noodle Bistro	Asian fusion cuisine	2F	P14
PizzaMarzano	Italian cuisine	2F	P14
TSUJIRI	Drink & Dessert Store	2F	P15
TWOSOME COFFEE	Dessert Cafe	2F	P15
Yue	Cantonese&Chaozhou Fusion Cuisine	2F	P15
ABC Cooking Studio	Cooking Studio	2F	P21
Clarks ORIGINALS	Selected Shoes	2F	P21
JINS	Eyewear Shop	2F	P21
MAJESTIC LEGON	Ladies fashion	2F	P21
MILLION CLUB	Suit Studio	2F	P22
Naive Blue	Photo Studio	2F	P22
Panasonic CLUXTA Salon	Experience Salon	2F	P22
RANDA	Ladies' Shoes	2F	P22
RECLASSIFIED	Perfume	2F	P23
The Little Gym	Kids Gymnastics	2F	P23
WOO	Fashion Goods	2F	P23
Dr.stretch	ameliorate	2F	P23
GHC	Medical & Dental Clinic	2F	P24
1F			
Starbucks Coffee	Coffee Shop	1F	P15
B1F			
bibigo	Healthy & Fresh Korean Cuisine	B1F	P16
BISTRO Katsukura	Japanese Cuisine	B1F	P16
blue frog bar & grill	Bar & Grill	B1F	P16
Dayone	Japanese Cuisine	B1F	P16
HOUCAILEI	Teahouse	B1F	P17
MARUCHU	Japanese Restaurant	B1F	P17
Mon chouchou	Sweet Shop	B1F	P17
Peter's Gourmet	Steak	B1F	P17
Rong's Hainan Chicken Rice	Hainan Chicken Rice	B1F	P18
Salad+	Western Healthy Food	B1F	P18
Shuei Wu Modern Kitchen	Taiwanese Food Takeaway	B1F	P18
TONCHIN	Noodles	B1F	P18
Urban Soup Kitchen	Soup Bar	B1F	P19
W FITNESS & YOGA	Fitness	B1F/B2F	P24
FORNET	Laundry	B1F	P24
LAWSON	Convenience Store	B1F	P24
B2F			
GRAND JIAYOU	Food Court	B2F	P19

Shops & Restaurants Floor Map

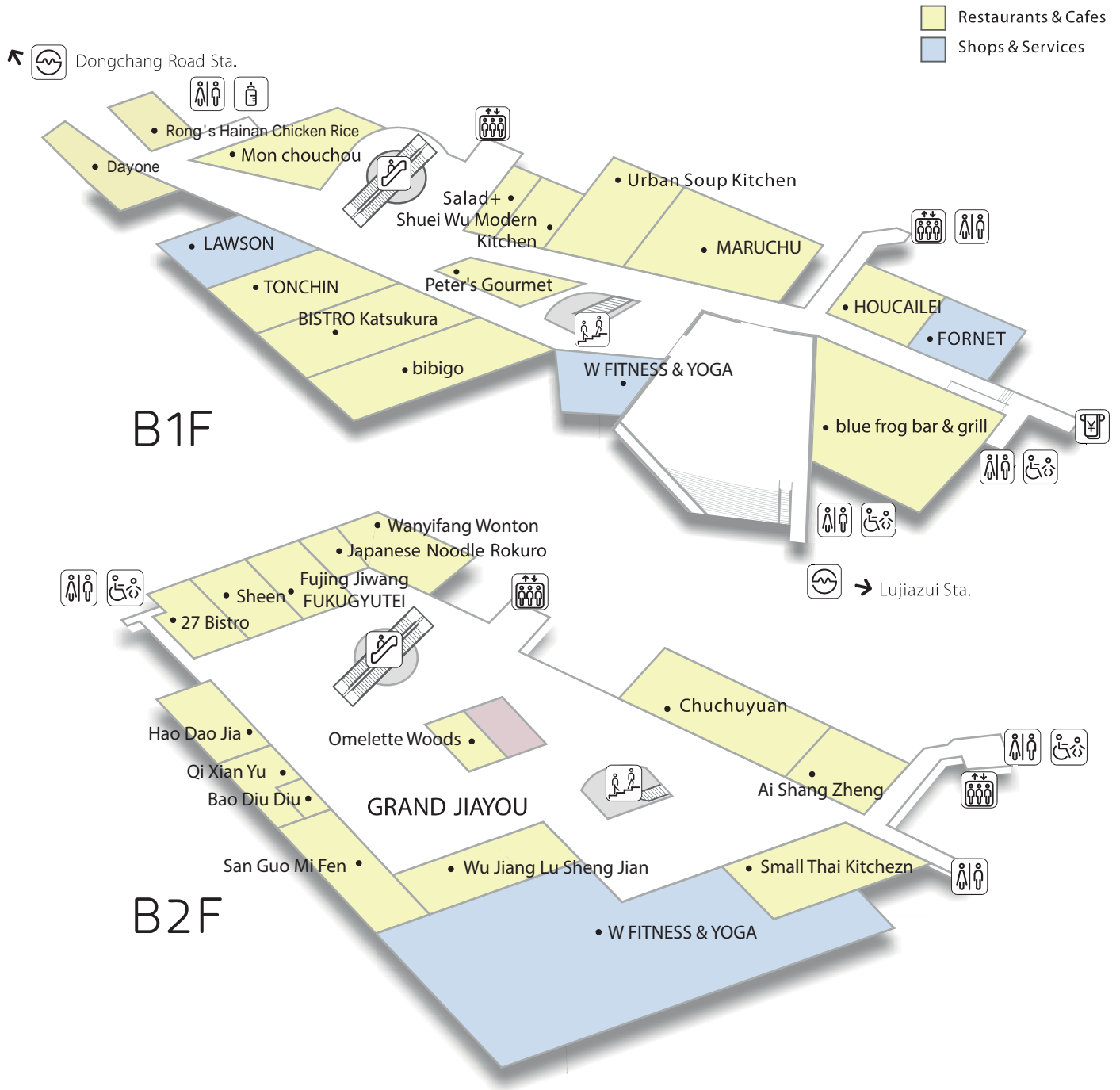
- Restaurants & Cafes
- Shops & Services
- Medical & Dental Clinic



Legend

- | | | | | | | | | | | | |
|--|---------------------|--|--------------|--|--------|--|--------------|--|--------|--|---------------------|
| | Information Counter | | Nursing Room | | Stairs | | Elevator | | Toilet | | Children's Restroom |
| | Escalator | | Powder Room | | ATM | | Smoking Area | | Subway | | |

Shops & Restaurants Floor Map



Shops & Restaurants

B2-3F

A stage for every business and casual scene

Serving as a stage for every business and casual scene, the shops & restaurants provides you with an elegant environment, ample space and ultimate services. You will also enjoy the customized beauty & health treatment services integrated with international fashion, as well as the delicate creatives. Our constant pursuit of high-quality lifestyle will surely build your perfect life.



Wi-Fi



Terrace



Kids Menu



Private Room



Early Morning Service
Before 9am



Late Night Service
After 10pm



Char-grilled & Japanese Cuisine



Chaoshan Cuisine



Japanese Cuisine



Herbal Drinks

Akasaka UMayA TOKYO

Tel: 6877-7765

Opening Hours :

11:00~14:30 16:30~22:00



In Akasaka Tokyo, where a number of excellent restaurants compete each other, a Japanese restaurant "Akasaka-Umaya" has been highly renowned for its real Japanese cuisine for a long time. Gourmets are just fascinated. We promise we serve the real Japanese cuisine and hospitality of Akasaka standard in Shanghai.

Chaotang

Tel: 3166-1668

Opening Hours : 11:00-22:00



Chaotang mainly serves Chaoshan classic delicacies. In pursuit of light taste and excelsior quality, we attach great importance to material choice and fresh seasonal ingredients, and focus on the local flavors. In this modern Chinese style Zen space, Chaotang provides hospitality services and share exquisite delicacies with you.

Ginpei

Tel: 5031-3900

Opening Hours :

11:00~14:00 17:00~22:00



Ginpei owns 11 restaurants in Osaka, Tokyo, Wakayama in Japan, and launched 3 restaurants in Shanghai. They endeavor to serve precious Japanese cuisine to customers, especially you cannot miss Ginpei's Taimeshi which is cooked by earthen pot rice with red sea bream. Come with your friends and colleagues to have a special time in Ginpei.

HERBALANCE

Tel: 156-0191-0901

Opening Hours :

8:00-21:00 / 9:00-21:00

(Mon~Fri) (Sat, Sun)



Herbalance is a brand aiming to promote herbal functional drinks, we believe people can obtain health and energy from the nature through a simple way, that is herbal drinks.



Xiaolongbao, Dumplings



Restaurant & Lounge

DIN TAI FUNG

Tel: 6877-6886

Opening Hours :

11:00-14:30 17:00-21:00 (Mon~Thu)

11:00-14:30 17:00-21:30 (Fri)

11:00-21:30 (Sat & holidays)

11:00-21:00 (Sun)



Din Tai Fung has made its mark to be a globally recognized delicacy in the Chinese cuisine with its "Xiao Long Bao" meaning delicate dumplings in bamboo steaming.

Eileen

Tel: 5757-7717

Opening Hours : 11:00-22:00



Eileen origins from East meets West Artdeco style, bringing out Shanghai modern classic, warm and cold color contrast, together with light and music brings a unique sensory impact. Cuisine retains the flavor of old Shanghai with a contemporary touch with surprises. International bar team provides a variety of cocktails and wine selection.



Sichuan/Cantonese Cuisine



Taiwanese Spicy Hotpot



International food



Chocolate

*Opening Hours may be subject to change.

SOUTH BEAUTY

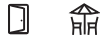
Tel: 6877-6298
Opening Hours : 11:00-22:00



As the world-class Chinese restaurant that combines tradition with innovative philosophies, SOUTH BEAUTY Group has won the favor from numerous business people, fashion elites and international guests with its unique and elegant dining experience.

Taihodien Spicy Hotpot

Tel: 3868-1899
Opening Hours : 11:30-22:00



Taihodien Spicy Hot Pot Restaurant, a favorite of celebrities from Hong Kong, Japan and Korea. Taihodien not only serves authentic Taiwanese flavors, but also introduces the concept of 'Hot Pot Without Sauces' to Shanghai.

element fresh

Tel: 6877-4001
Opening Hours : 9:00-22:00



Best known for fresh salads, juices and smoothies, the Element Fresh menu also features creative dinner and Asian sets, all prepared with minimal oil and no added MSG!

GODIVA

Tel: 6877-7792
Opening Hours : 10:00-22:00

Created in 1926 in Brussels by Joseph Draps, GODIVA Chocolatier has become one of the most prestigious chocolate brands in the world. The recipes of its founder and its unique chocolate making process remain the secrets of GODIVA quality.



Vegetarian Restaurant



Vietnamese Cuisine



Asian fusion cuisine



Italian cuisine

WUJIE

Tel: 6877-7715
Opening Hours : 11:00-22:00



WUJIE focuses on using seasonal ingredients to cook delicious, healthy, and creative dishes beyond boundaries. Everything is aligned with the vision to demonstrate the boundless options of a vegetarian lifestyle, fueled by inspiration from all over the world.

ANISEED SAIGON

Tel: 6163-8567
Opening Hours : 10:00-22:00



ANISEED SAIGON is more directed towards healthier and quicker living style. Here you can taste many Vietnamese style delicacies such as vermicelli, French style sandwiches, Vietnamese spring rolls and Rice paper rolls, curry, many types of Vietnamese desserts and coffee, and much more.

Mendo Noodle Bistro

Tel: 5895-6861
Opening Hours : 10:00-22:00



Innovation is the essence of Mendo Bistro. From the northwest of China to south of Vietnam, all the ingredients are combined and made according to the exacting french culinary cooking standards, so that every step and detail in the process achieves a brand new experience in every bowl of Mendo Noodles.

PizzaMarzano

Tel: 6882-2556
Opening Hours :
11:00-21:30 / 11:00-21:00
(Mon~Fri) (Sat, Sun)



The first restaurant opened in 1965, PizzaMarzano already by world's consumer acceptance and the rapidly expand to more than 500 stores now. We not only provide Italian food, but also bring a real taste of the Italian Life Style.



2F

Drink & Dessert Store

TSUJIRI

Tel: 177-0189-1193

Opening Hours : 10:00-21:00



TSUJIRI was founded in 1860 in Uji Kyoto, Japan. After 155 years' accumulation, TSUJIRI has become the most famous and representative brand of matcha. We always select the top matcha powder strictly, which was planted by TSUJIRI's Kyoto shop, to make healthy & delicious desserts & products.



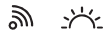
2F

Dessert Cafe

TWOSOME COFFEE

Tel: 6075-0975

Opening Hours :
7:30-21:00 / 10:00-20:00
(Mon~Fri) (Sat, Sun)



Twosome Coffee is a boutique coffee shop providing live experience of making cakes and sandwiches. A variety of delicate desserts by patissiers will bring you a unique enjoyment. We also offer delivery service of pleasant flavor from Twosome at anytime.



B1F

Healthy & Fresh Korean Cuisine

bibigo

Tel: 5888-2151

Opening Hours : 10:00-22:00



Bibigo makes you experience traditional Korean taste and enjoy the fresh & healthy food at the same time. Bibigo opened across 7 countries and has been selected as Michelin recommended restaurant twice.



B1F

Japanese Cuisine

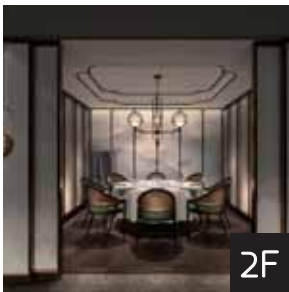
BISTRO Katsukura

Tel: 5083-2381

Opening Hours : 11:00-21:30



Kyoto is a place where the people possess a high standard in regard to the taste and quality of their food. With this in mind, Katsukura has aimed to produce the best Tonkatsu (pork cutlets) in town. Every ingredient and material are carefully selected.



2F

Cantonese&Chaozhou Fusion Cuisine

Yue

Tel: 6106-2189

Opening Hours : 11:00-22:00



Witnesses to the legendary life of the financial industry, It is well-known as a fantastic cantonese restaurant by everyone from Beijing financial industry. Famous designers, gourmets, master service team to together to create exquisite fine cuisine.



1F

Coffee Shop

Starbucks Coffee

Tel: 6877-5001

Opening Hours : 7:00-21:00



Brewed to perfection from the top-grade beans from around the world by expert baristas, a cup of Starbucks coffee in the distinctively stylish interior brings a moment of relaxation into your office life.



B1F

Bar & Grill

blue frog bar & grill

Tel: 6877-8668

Opening Hours : 10:00-23:00



Blue Frog's approach is simple: serve tasty western dishes in generous portions, which are prepared with the freshest ingredients. We're all about unwinding in a relaxed setting with friendly service, a huge selection of food & drinks, and good company.



B1F

Japanese Cuisine

Dayone

Tel: 3867-2237

Opening Hours :
11:00-15:00 / 17:00-22:00 (Mon~Fri)
11:30-21:00 (Sat, Sun)

Ochazuke is a Japanese traditional dish with a long history since Heian era over 1000 years ago. It took many years for Dayone to make their homemade dashi produce a perfect smell and taste to please their customers. With delicately selected ingredients, Dayone is a first stone roasted Ochazuke specialized restaurant.

**B1F**

Teahouse

HOUCAILEI

Tel: 5093-6660
Opening Hours : 11:00-20:00

HOUCAILEI, the most relaxing and beautiful tea house in the universe! It is not just about the mesmerizing oriental ambience with a caring and intimate touch, but also about the phenomenal service experience it promises to deliver.

**B1F**

Japanese Restaurant

MARUCHU

Tel: 6233-8970
Opening Hours : 11:00-22:00

MARUCHU was founded in 1916 in Nagoya, Japan, and now is operating about 200 shops in all over Japan. MARUCHU is offering the favorite taste of Japanese food, and the pride of Maruchu spirits.

**B1F**

Hainan Chicken Rice

Rong's Hainan Chicken Rice

Tel: 5896-5018
Opening Hours : 11:00-21:00



With special ingredients of Sanhuang Chicken and three types of home-made spices, Rong's Hainan Chicken Rice is endowed with a tender refreshing taste and sweet delicate fragrance to chicken. We forge ahead to offer delicious authentic Southeast Asian Cuisine.

*Opening Hours may be subject to change.

**B1F**

Western Healthy Food

Salad+

Tel: 6877-7796
Opening Hours :
11:00-20:00 / 11:30-19:00
(Mon~Fri) (Sat, Sun)

Salad+ provides a healthy, convenient and value-oriented food option. You can easily taste our refreshing selections of refined tacos, original salads, vegetable soups, juices and snacks that all are created by our master Italian Chef to satisfy your taste buds and help you live a healthy life.

**B1F**

Sweet Shop

Mon chouchou

Tel: 3872-1163
Opening Hours :
8:00-21:00 / 8:00-20:00
(Mon~Fri) (Sat, Sun)



Mon chouchou provides delicate desserts and pastries that skillfully made by patissiers with various selected ingredients. Mon chouchou will bring you happiness and gratitude shared with your families and friends.

**B1F**

Steak

Peter's Gourmet

Tel: 186-2193-4167
Opening Hours : 11:00-21:00

Gourmets Peter Zhou from Taiwan, based on the understanding of beef and the taste of cooking, Peter has visited Europe and the United States to find delicious food and search for the perfect between the ingredients of the collocation on business trip period in 20 years. Nowadays, experts' taste is not unreachable. Peter invites you to come and enjoy the experts' taste.

**B1F**

Taiwanese Food Takeaway

Shuei Wu Modern Kitchen

Tel: 6877-7207
Opening Hours :
8:00-20:00 / 11:00-19:00
(Mon~Fri) (Sat, Sun)



Pure, refined rice culture, classical tea & drinkings, Snacks from Taiwan. Takeaway and delivery services for delicious Taiwanese cuisines: Braised pork on rice, Stewed beef with rice, special meat soup with rice, Taiwanese sausage, Fried chicken, Meat ball soup... The joys of Taiwanese traditional delicacies!

**B1F**

Noodles

TONCHIN

Tel: 6877-7728
Opening Hours : 11:00-22:30



TONCHIN bears a great reputation since it opened in 1992 in Tokyo Ikebukuro district. As its first international branch, TONCHIN sincerely welcomes you with elaborate noodles, soups and ingredients.



B1F

Soup Bar

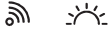
Urban Soup Kitchen

Tel: 400-888-5417

Opening Hours :

8:00-20:30/ 11:00-19:30

(Mon~Fri) (Sat, Sun)



Welcome to the world of gourmet soups, sandwiches, and salads. URBAN SOUP KITCHEN brings healthy comfort food to your home and office.



3F

Health Care

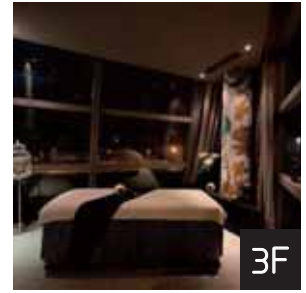
BREO Flagship Store

Opening Hours :

10:00-21:00/10:00-21:30

(Mon~Fri) (Sat, Sun)

BREO has been devoted in providing people with saluterous sleep for 19 years. The portable massager, will help to release pressure instantly, and eliminate fatigue. BREO head massager obtained the patent for the invention, and has occupied the leading position in the field globally.



3F

Relaxation

Green Massage

Tel: 6877-8188

Opening Hours : 10:30-24:00



With customized services, a comfortable environment, first-class therapists and specialized treatments, Green Massage provides a balance of yin & yang as well as body & mind for people who pursue a high-quality lifestyle.



B2F

Food Court

GRAND JIAYOU

Tel: 5015-9665

Opening Hours :

7:30-20:00 / 10:00-20:00

(Mon~Fri) (Sat, Sun)



Nearly 14 sections of dining options let the dinners to choose from different feature cuisine by reasonable price. Such as Chinese fast food, Sichuan cuisine, Japanese style curry rice, fresh juice and highly-selected grilled beef etc. can be found here.



BISTRO



3F

TEA TEAWARE

WU YI STAR TEA INDUSTRIAL

Tel: 5068-1691

Opening Hours : 9:30-21:00



100% original, rare, authentic, traditional Wuyi rock tea (Dahongpao). A strong flavor of mountain and water from Wuyi mountain, with the flower aroma and sweet fruits. The best tea from the largest continuous organic Oolong tea garden in Asia.



3F

High-Tech GYM

XBODY IMPULSE

Tel: 5894-3066

Opening Hours : 10:00-22:00



German Technology. Specially adapted for Chinese Clients. High-Tech EMS training without weight under Personal EMS Trainers for Body building, Shaping, Weight-loss and Better Health. Just 20 mins training equivalent to 2 hours Gym training.

*Opening Hours may be subject to change.



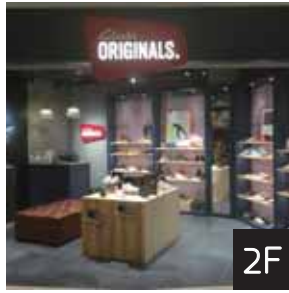
2F

Cooking Studio

ABC Cooking Studio

Tel: 6877-6661
 Opening Hours :
 10:00-21:30/ 10:00-20:00
 (Mon~Fri) (Sat, Sun)

ABC Cooking Studio is exclusively for ladies. You can enjoy cooking, baking cakes or bread here. We have many types of experience courses, and all of them are reservation only. Come and enjoy cooking with your friends! You are always welcome to drop in and see us at our studio!



2F

Selected Shoes

Clarks ORIGINALS

Tel: 5043-0520
 Opening Hours : 10:00-21:00

In 2015, Clarks ORIGINALS celebrate its 65th anniversary with its iconic products, Desert Boot, Wallabee, Desert Trek, Lugger, Natalie and the new member, Trigenic. Many fashion icons and artists are very into these collections.



2F

Suit Studio

MILLION CLUB

Tel: 6877-6628
 Opening Hours : 10:00-21:00

MILLION CLUB is a suit exclusive shop belonged to the Japanese prestigious clothes company DAIDOH. Our direct factory provides tailor-made suits under a series of precise and professional procedures, making sure to provide you formfitting and fashionable suits.

*Opening Hours may be subject to change.



2F

Photo Studio

Naive Blue

Tel: 6101-4399
 Opening Hours : 10:00-22:00

Naive blue was founded in 2010, the core service is dedicated to ID photo, commercial portrait and high-end family photo. It has provided photo service for more than 900,000 people. Like its name—Naive blue, that is the yearning for good.



2F

Eyewear Shop

JINS

Tel: 5045-5171
 Opening Hours : 10:00-21:30

The first branch of the Tokyo well-known eyewear brand-JINS is now coming to Shanghai! We provide over 1200 sorts of eyewears, including the series of Airframe which its weight is only 10g and the series of Titanframe. You could get your eyewears within 30 mins after the eye test.



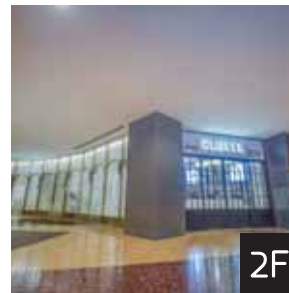
2F

Ladies fashion

MAJESTIC LEGON

Tel: 5082-8281
 Opening Hours : 10:00-22:00

Majestic Legon is an elegant, sweet and comfortable-wear brand. It provides apparel that is suitable for all occasions. We provide trendy products for ladies who care about both quality and fashion.




2F

Experience Salon

Panasonic CLUXTA Salon

Tel: 6877-6990
 Opening Hours :
 10:00-20:30 (SPA & Hair Salon)
 8:00-20:00 / 10:00-18:00 (Cafe)
 (Mon~Fri) (Sat, Sun)

 Panasonic CLUXTA SALON, based on "Relax+Beauty+Cafe" as a key concept to provide an elegant Japanese-styled modern salon to all the beauties. Customers can experience value-added services from Panasonic high tech products, hairstyling and cafe by professionals.



2F

Ladies' Shoes

RANDA

Tel: 6877-8078
 Opening Hours : 10:00-22:00

"RANDA" is quite a famous female shoes brand with 60 shops in Japan. It brings you abundant and varied kind of choices to help you to be fashion icon. You can find your own style here. This is RANDA, with special design and lovely brand.



2F

Perfume

RECLASSIFIED

Tel: 6131-2844
Opening Hours : 10:00-22:00

RECLASSIFIED was born in Shanghai. We are an original brand of perfumery who put forward the concept of "lite salon" for the first time in China. RE's design and style is very simple and delicate. We represent each product with philosophy of art. Our products include personal fragrance, scented candle, etc.



2F

Kids Gymnastics

The Little Gym

Tel: 5418-2260
Opening Hours : 9:00-21:00

Having 300 locations across the globe, The Little Gym is the world's premier experiential learning and physical development center for kids ages 4 months through 12 years. Each week, progressively structured classes and a positive learning environment create opportunities for your child to try new things and build self-confidence.



B1F/B2F

Fitness

W FITNESS & YOGA

Tel: 5820-8308
Opening Hours :
7:00-22:00 / 10:00-20:00
(Mon~Fri) (Sat, Sun)

W Yoga is tailor made for the white-collar by Wills Fitness. It is designed with you in mind not only enables you to enjoy fun and de-stress from working out in the club, but also achieving the balance in your life.



2F

Fashion Goods

WOO

Tel: 6877-8868
Opening Hours : 9:00-22:00

WOO, established in 2002, is regarded as 'A Recommended Shop for Tourists'. Specializing in deluxe silk scarves and cashmeres designed by fashion designers, WOO is very proud of its exclusive top-level products.



2F

ameliorate

Dr. stretch

Tel: 5058-0755
Opening Hours : 10:00-22:00



Dr.stretch is a stretch shop that specialize in body maintenance. You can have a 1-on-1 stretch session with our professional core balance stretch trainer who acquired unique technology to stretch your body. A businessman who work long hours on a desk work, Range from Kids to professional athletes. Until injury prevention in the 60's as well can be used widely.



Convenience Store
Tel: 6877-5095 3F
Opening Hours :
7:00-24:00



Pharmacy
Tel: 6877-5108 3F
Opening Hours :
8:30-20:30



Bank
Tel: 6877-6168 3F
Opening Hours :
9:00-17:00
(Closed on weekends,
National holidays)



Post Office
Tel: 6877-5160 3F
Opening Hours :
9:00-17:00
(Closed on weekends,
National holidays)



Laundry
Tel: 6877-5688 B1F
Opening Hours :
8:30-21:00



Convenience Store
Tel: 6877-4006 B1F
Opening Hours :
7:00-24:00



Medical & Dental Clinic
Tel: 6877-5093 2F
Opening Hours :
8:00-19 :00(Mon~Fri)
9:00-17:00(Sat, Sun)

Facility

Nursing Room <Location:B1&2F,Shops & Restaurants>

A neat cozy room for nursing and diaper changing.

Powder Room <Location:2F,Shops & Restaurants>

SWFC provides elegant make-up area for ladies.

Children's Restroom <Location:2F,Shops & Restaurants>

Children's little toilet is designed for children.

Multifunction Toilets <Location:3F-B2F Shops & Restaurants>

Special multifunction toilets are available for those with physical disabilities or those accompanied by infants or small children.

Taxi Stand <Location:1F Taxi stand>

Please wait here when you need a taxi.

Smoking Area <Location:2F Deck>

SWFC has 'Non-smoking' policy in public area. Please do not smoke outside the smoking area.

Service

- Printing & Photocopying
- Baby Stroller Lending★
- Wheel Chair Lending★
- Mobile Phone Charger lending★
- Free Wi-Fi
- Information Inquiry
- Umbrella Lending★
- Handle Complaints
- Tool Kit Lending★
- Medicine Cabinet
- Exchange Parking Coupon
- Reading Glasses
- Lost And Found
- One-off Masks
- Baby Diaper
- Wet Tissue
- Sewing Kit
- Candies

Service time: 9:00-19:00

Location: Shops & Restaurants 2F Information Counter

“★”Need deposit for services

Contact

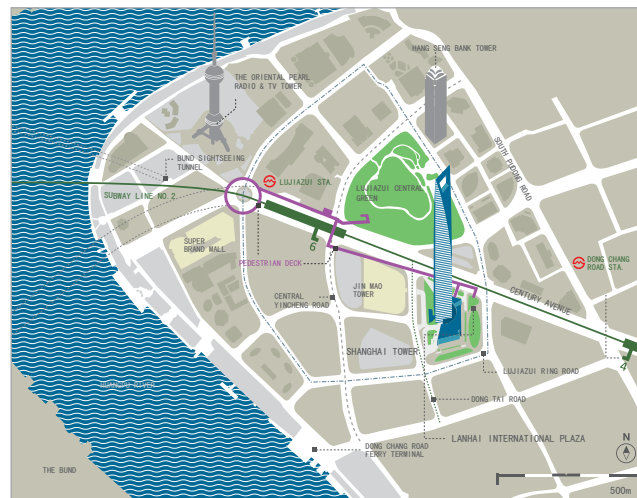
For helpful information as well as various pamphlets and brochures, please visit the Information Counter.

Business Hours : 8:00-20:00 (Weekends, Holidays 9:00-19:00)

Location: 2F, Shops & Restaurants

Tel.(021) 3867-2008 (Business Hours : Everyday 8:00-20:00)

Wechat:



Address

No.100 Century Avenue, Pudong New Area, Shanghai

By Subway

Metro Line No.2

Lujiazui Station. Exit No.6 / Dongchang Road Station. Exit No.4.

Parking

Capacity: 1,100 vehicles

Business Hours : Open 24 hours

Rates: RMB15 for every 60 min.

Get free parking upon consumption over:

One Receipt Spending Amount(NOT accumulated)

150 RMB 1 hour free parking

300 RMB 2 hour free parking

450 RMB 3 hour free parking

* Each vehicle can only enjoy 3 hours Complimentary parking per time per day.

* Same-day original official receipt must be presented for redemption. Out-dated, duplicate, damaged, hand written, bill-payments, credit card, re-printed receipt copy are NOT accepted.

* Redeemed offers cannot be returned and exchanged for cash, discounts or other products.

* Purchase of cash and gift vouchers/gift cards, deposit services, spending in banking services, telecommunications services, Hotel, Observatory, store-value cards and any value added services are NOT accepted.

* Purchase in pop-up stores is unredeemable.

